



# Smithy Park

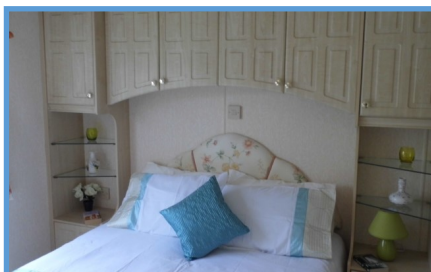
- Country Holiday Park -

## Pre Owned Willerby Granada



### Features

36 ft x 12 ft  
Central heating  
Winter insulated  
Double glazed  
2 bedroom  
Ensuite  
Enviro green  
Sited to pitch



2003 Model Licensed to January 5th, 2029

Smithy Park, Abermule, Montgomery, Powys, SY15 6ND  
01686 630 657 or [info@smithypark.co.uk](mailto:info@smithypark.co.uk)  
[www.smithypark.co.uk](http://www.smithypark.co.uk)